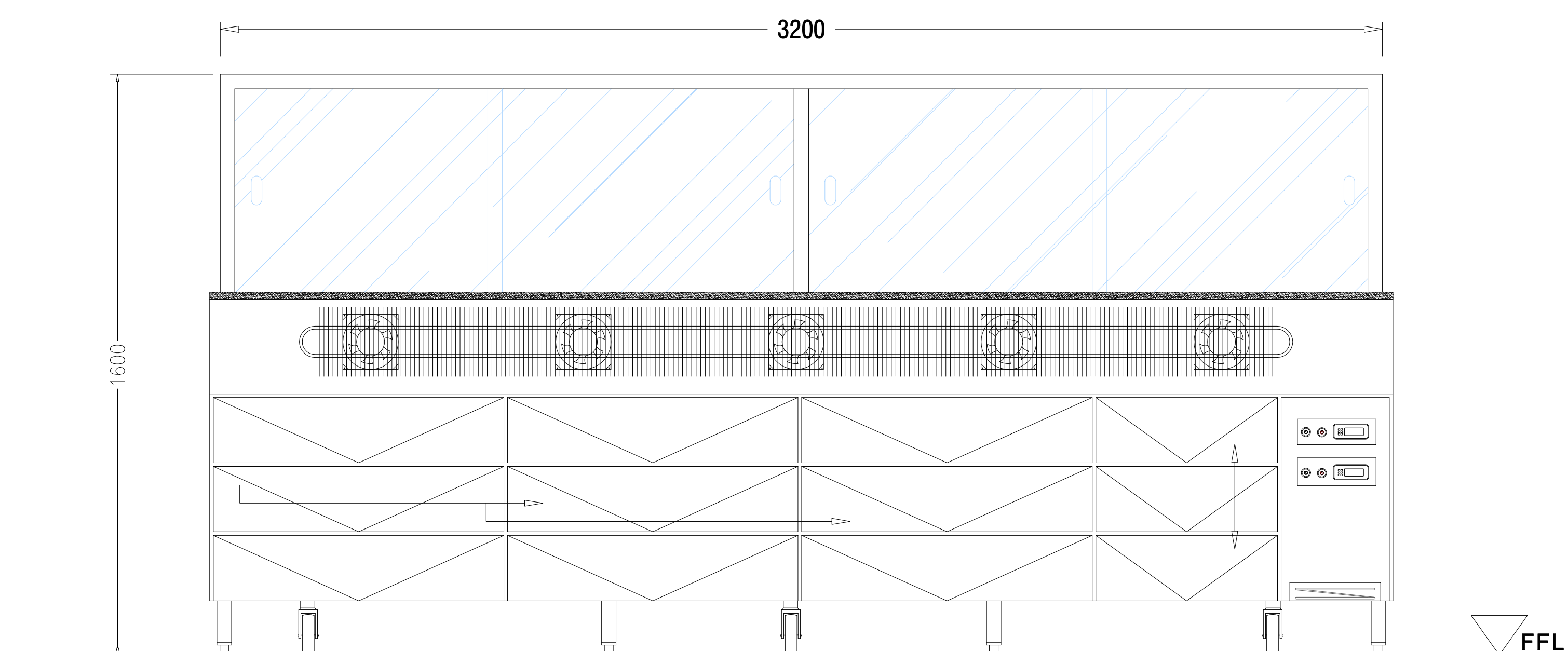
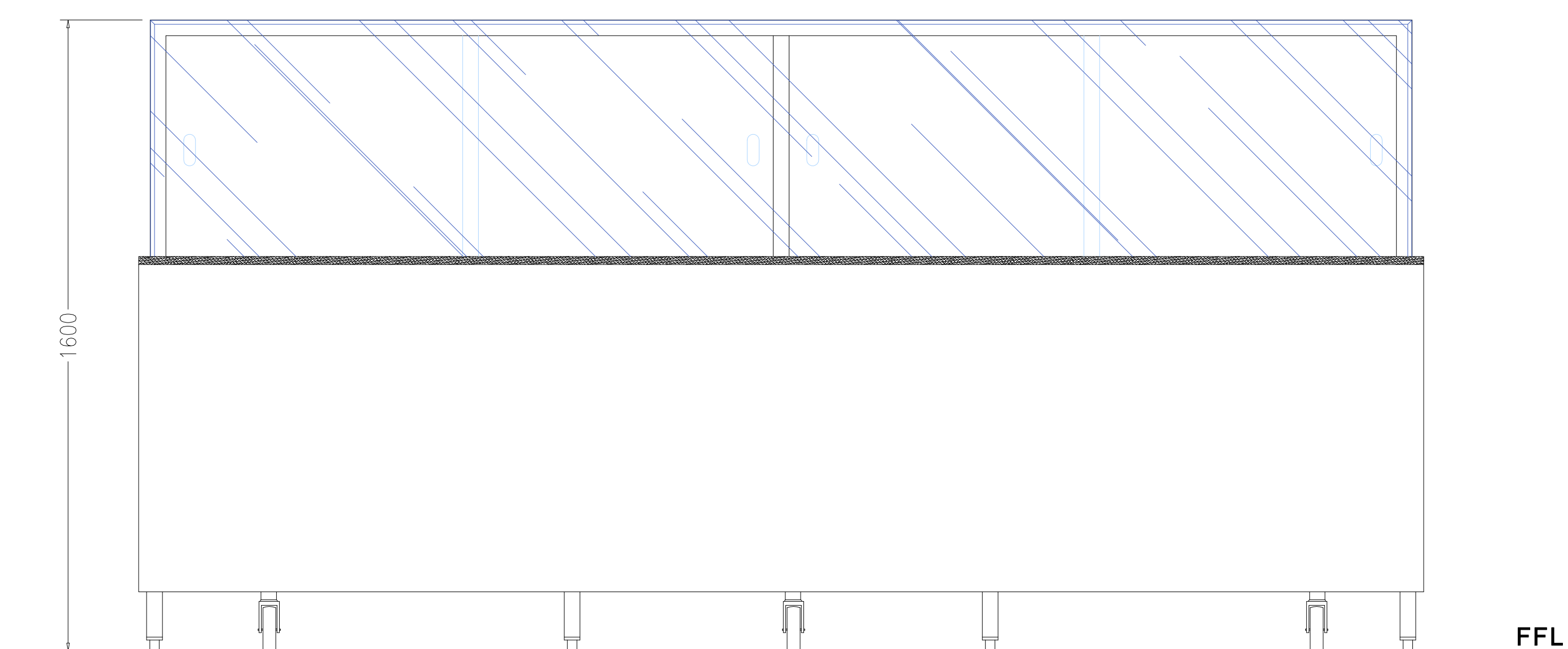


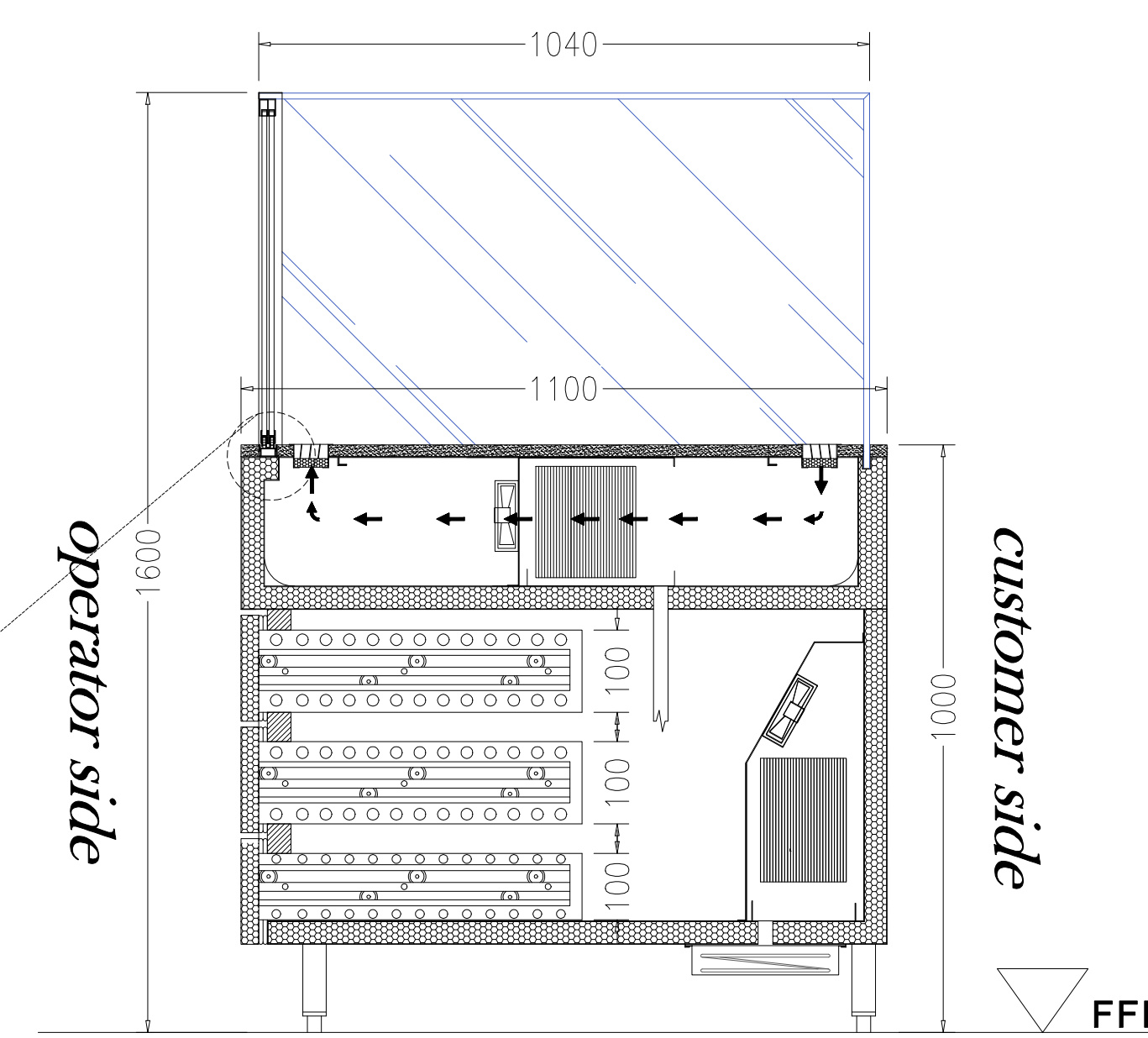
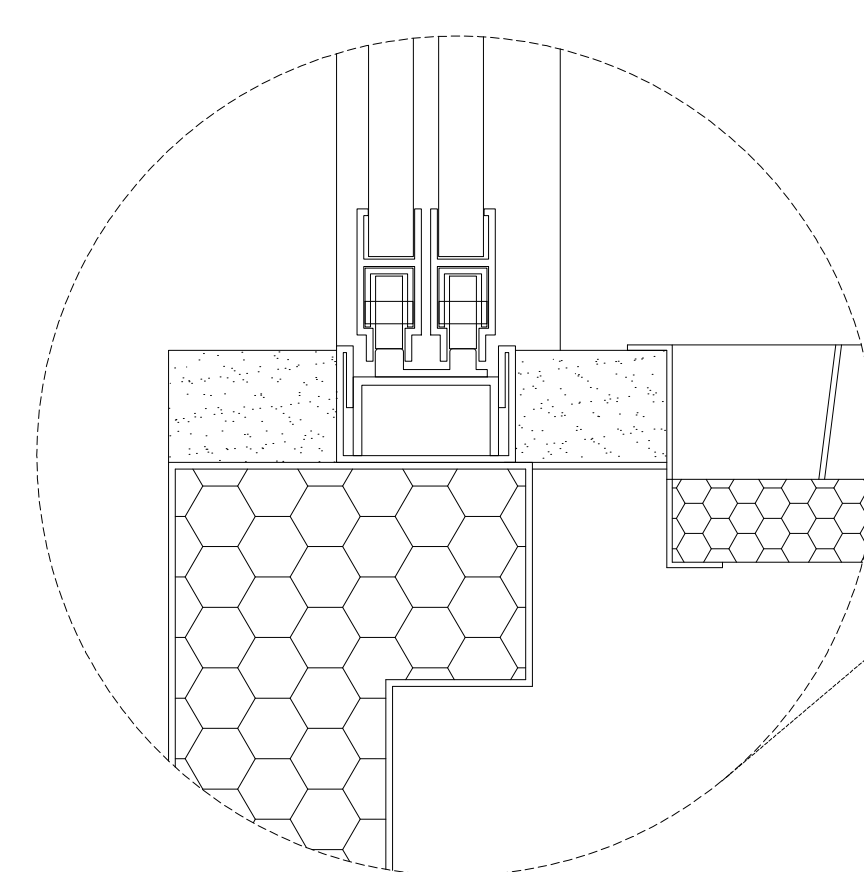
TOP VIEW



ELEVATION-OPERATOR SIDE



ELEVATION-CUSTOMER SIDE



SECTION VIEW



- Pastry display with sliding glass door and refrigerated drawer cabinets below with air blown cooling system.
 size: 3258 x 1100 x 1000 + 600 mm
 Display size:- 3200x1040
- General Specification:-
- * Power input plug: 13A
 - * Voltage supply: 230V/50Hz/1 PHASE
 - * Operating Temp: +4 to +8°C
 - * Compressor: 1 HP - TECUMSEH
 - * Refrigerant: R134a
 - * Decibel Rate: 68dBA

REV	DATE	DESCRIPTION	PREP BY

CLIENT

L'ETO

KITCHEN EQUIPMENT SUPPLIER



PROJECT

DRAWING TITLE

PASTRY DISPLAY

DOCUMENT/DRAWING NUMBER

SIZE: A1

REV